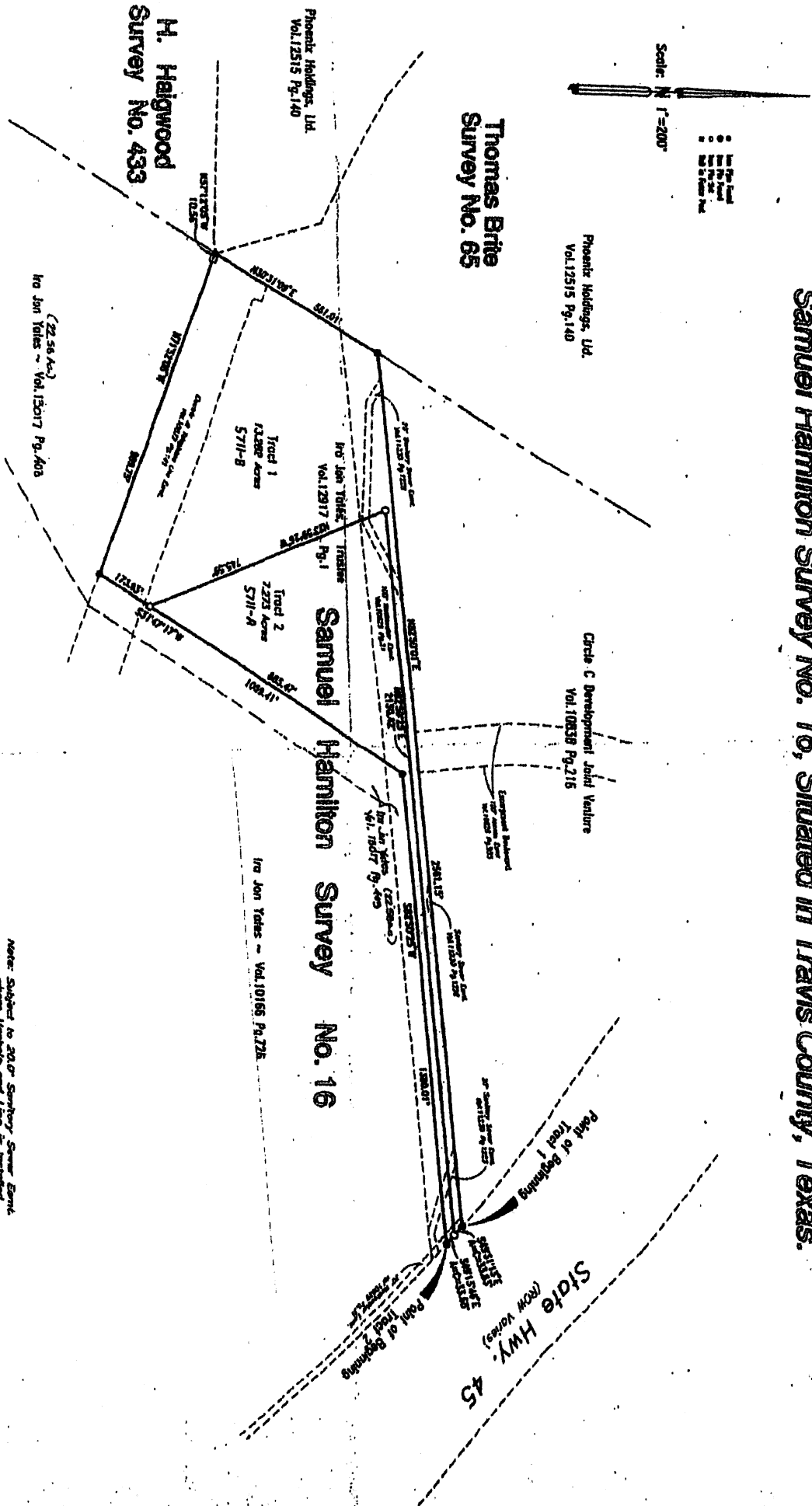


Sketch to Accompany Field Notes for Two (2) Tracts of Land out of the Samuel Hamilton Survey No. 16, Situated in Travis County, Texas.



Scale: N 1" = 200'

Phoenix Holdings, Ltd.
Vol. 12515 Pg. 140

Thomas Britte
Survey No. 65

Phoenix Holdings, Ltd.
Vol. 12515 Pg. 140

H. Haigwood
Survey No. 433

Circle C Development Joint Venture
Vol. 10838 Pg. 216

Samuel Hamilton Survey No. 16

In Jon Yates - Vol. 10166 Pg. 226

In Jon Yates - Vol. 15017 Pg. 408

Note: Subject to 30.0' Surveyor's Error
where latitude and line is restored
in Vol. 11230 Pg. 1210

Surveyed by: *Robert A. Benson*
STEVE H. BRINSON - R.P.L.S. No. 4340
STEVE H. BRINSON SURVEYING CO.
1715 Capital of Texas Highway, So., Suite 208
Austin, Texas 78746 (512) 347-8016 Fax (512) 347-8516

